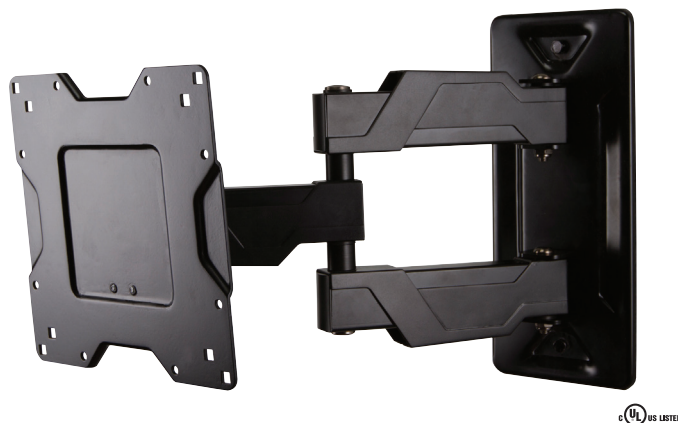


OC80FM product information sheet



The OC80FM is ideal for entry-level consumers looking for a low-profile and easy-to-use large full motion mount.

Product Benefits*

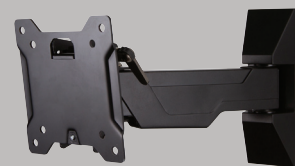
- Low 3.2" (82mm) mounting profile
- Tilt, pan and swivel for maximum viewing flexibility
- Lift n' Lock™ allows you to easily attach your TV to the mount
- Arm design provides ample throw and nests centered on the wall
- Extends 14" (357mm) from wall when in use and retracts to 3.2" (82mm) when not in use
- Integrated cable management and plastic covers hide wires
- Allows for simple leveling adjustments post-installation
- Durable powder coat finish
- Two-tone design and modern aesthetic complements newer TVs
- Includes adapters for greater VESA compatibility
- Simple to install and use
- Ships fully assembled
- Includes complete hardware kit

Product Specifications*

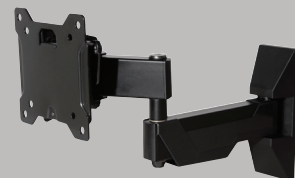
Fits most: 37–63" TVs
Supports up to: 80 lbs (36.3 kg)
Tilt: +15° to -5°
Pan: Up to 180°
Mounting profile: 3.2" (82mm)*
Maximum extension: 14" (357mm)*
VESA compliance: 200x200 to 600x400
Mounting: Single-stud or solid wall
UL listed: Yes
Warranty: 5 years
Color: Black

*adapter adds .2" (6mm)

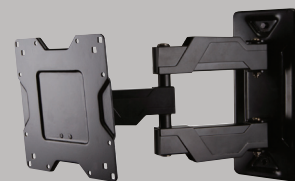
Series



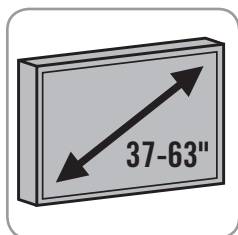
OC40FM



OC40FMX



OC80FM



Take the guess work out of choosing your perfect mount! The OC80FM is compatible with most 37–63" TVs on the market today.

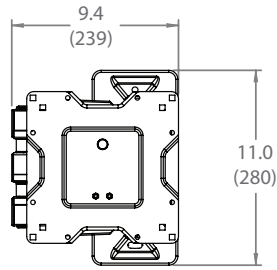
*Subject to change

800.MOUNT.IT (800.668.6848)



01022013

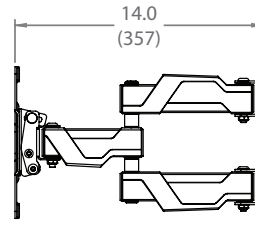
OC80FM technical data sheet



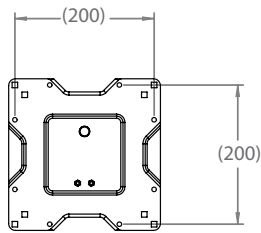
FRONT VIEW



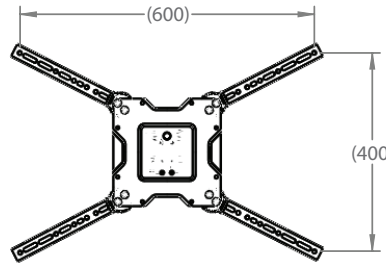
MOUNTING PROFILE



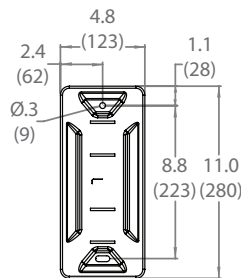
MAXIMUM EXTENSION



PANEL ATTACHMENT -
VESA COMPATABILITY (MM)



PANEL ATTACHMENT -
VESA COMPATIBILITY (mm)
WITH ADAPTERS



WALL MOUNTING



inches (mm)

	Packaging UPC	MC UPC
Americas	698833022070	10698833022077
International	698833022070	10698833022077

	Dimensions WxDxH Inches (mm)	Wt lbs (kg)	Qty
Box	14.2 x 12.8 x 4.5 (360x325x113)	11 (5)	NA
MC	14.6 x 9.7 x 13.8 (370x245x350)	23.2 (10.5)	2

Box Contents	Qty
Wall plate	1
Spider46 adapter	4
Arm assembly (with cable management)	1
Monitor plate	1

Box Contents	Qty
Tilt tension handle	1
Complete wall hardware kit	1
Complete hardware kit	1
Instruction Manual	1

